

Frequency Inverters  
**S1 Series**

**HITACHI**  
Inspire the Next





# S1 Series

## The new Standard in Sensorless Vector Control Drives

Hitachi maintains research and development departments throughout the business. These are continually working on the further improvement of products and technologies and synergy effects are specifically used in product policy.

Hitachi offers a broad range of inverters for many industrial applications. The inverters' modular design and high versatility ensure optimal, cost-efficient technical solutions which can be individually adapted to the respective application. The industrial inverters can be configured easily, and are designed to deliver unprecedented performance, reliability and flexibility.

The new S1 series is perceived as the new standard for general purpose inverter, highly flexible and user friendly for easy commissioning. It is suitable for a wide range of applications, using advanced sensorless vector control. S1 achieves exceptional stability and efficient drive characteristics to save energy and maximize performance.



Full product line-up from 0.4kW up to 500kW





# Compact Design Dual Rating (0.4kW – 2.2kW)

## Features

Thanks to the compact design, less installation space is required. Flexible installation with DIN rail and wall mounting possibilities. Available to mount multi-inverter in side-by-side installation to be more effective and space-saving.

- Easy maintenance
- Various installation ways
- Excellent performance
- Multi-function and easy to use
- Potentiometer on the front for easy frequency adjustment

## Dual rating to support space and cost savings

LD- Low Duty for Applications with normal load without large temporarily overload or torque.  
 ND- Normal Duty for applications with heavy load and constant high torque.



## Optional external keypad

- Supports optional external LED keypad
- The external LED keypad supports parameter copy function

## Advanced thermal technology



Maintenance friendly thanks to easily removable cooling fan.



For space saving side-by-side mounting it is required to remove the protective film from the top heat releasing grids.



1PH 220V (-15%) – 240V (+10%)  
 3PH 380V (-15%) – 440V (+10%)

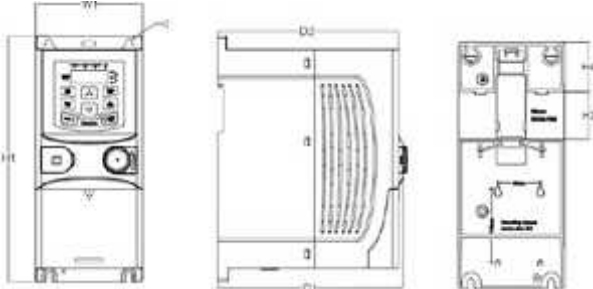
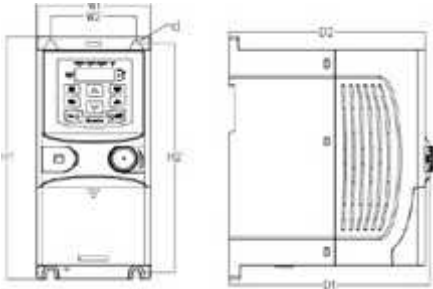


**Mounting Dimensions**

Model	W1	W2	H1	H2	H3	H4	D1	D2	Installati on hole (d)
S1-00032SFE	80.0	60.0	160.0	150.0	35.4	36.6	123.5	120.3	5
S1-00055SFE	80.0	60.0	160.0	150.0	35.4	36.6	123.5	120.3	5
S1-00100SFE	80.0	60.0	185.0	175.0	35.4	36.6	140.5	137.3	5
S1-00130SFE	80.0	60.0	185.0	175.0	35.4	36.6	140.5	137.3	5
S1-00032HFE	80.0	60.0	185.0	175.0	35.4	36.6	140.5	137.3	5
S1-00055HFE	80.0	60.0	185.0	175.0	35.4	36.6	140.5	137.3	5
S1-00073HFE	80.0	60.0	185.0	175.0	35.4	36.6	140.5	137.3	5

**Wall Mounting**

**Rail Mounting**







# 4.0kW — 500kW

Dual Rating

22kW ... 630kW 690V versions

S1 is the new simple and easy to use inverter with top performance. Targeting for OEM equipment markets, mainly covering general applications like packaging, winding, Fan & Pump and many others.

## Product Features

- Supports SVC control
- Enables high precision of speed torque control and fast speed response
- Integrates safety function-STO (Safe Torque OFF, SIL2)
- The unique I/F control is very suitable at low speed with high torque requirements
- The transition from rotating state to dc braking is very smooth. The current impact is small, and the current response of dc braking is faster
- Excellent performance at "Catch-on-the-Fly" Solid
- plastic housing 4 – 75kW
- Solid metal housing 90 – 500kW
- 37kW Standard built-in DBU
- Internal C3 EMC filter, Optional external C2 EMC filter
- PID control function (with sleep function).
- Automatic voltage regulation (AVR), Torque compensate function
- Optional parameter copy LED external keypad, meeting the requirements of diverse applications

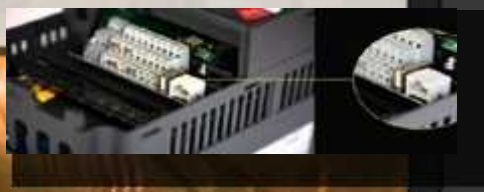
## Typical applications

- Pumps & Irrigation
- Fans
- Hoisting / Crane
- Crushers
- Mills
- Conveyors
- Machine Tools
- CNC
- Mixers
- DC Motor replacement
- Slip-ring motor replacement
- Servo drive
- Chemical
- Plastic extruder, granulator
- Variable speed motor control
- Energy Saving



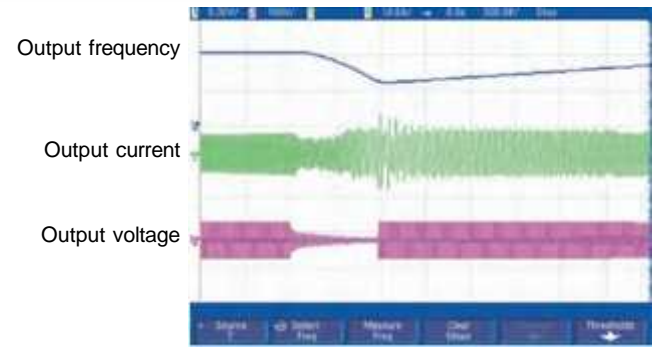


3PH 380V (-15%) – 440V (+10%)



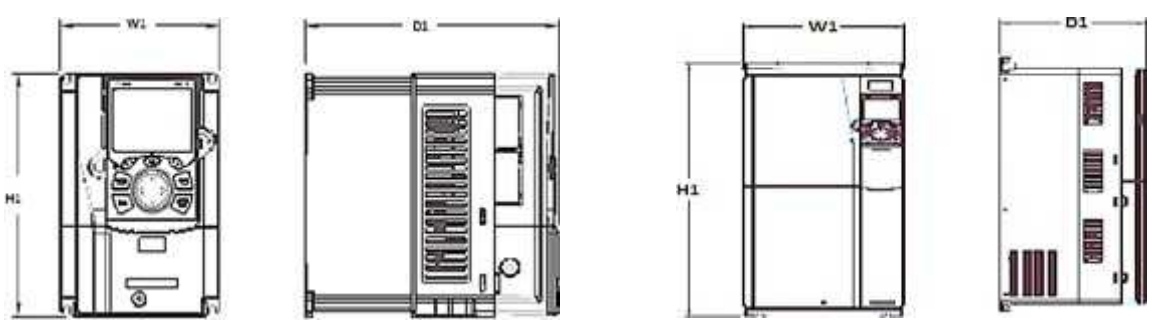
**Excellent performance at "Catch-on-the-Fly"**

The S1 is very suitable for applications where large flywheel masses continue to run for a very long time after the power supply has been interrupted. These are for example applications with large fans or centrifuges. S1 detects the remaining speed and catches the motor at the correct position to accelerate back to the intended speed.



**Dimensions (4kW – 500kW)**

Voltage	Model	W1	H1	D1	Installation hole (d)	Fixing screw
400V	S1-00125HFEEF	126	186	201	5	M4
	S1-00170HFEEF; S1-00230HFEEF	146	256	192	6	M5
	S1-00320HFEEF; S1-00380HFEEF	170	320	220	6	M5
	S1-00450HFEEF; S1-00600HFEEF	200	340.6	208	6	M5
	S1-00750HFEEF; S1-00920HFEEF	250	400	223	6	M5
	S1-01150HFEEF; S1-01500HFEEF	282	560	258	9	M8
	S1-02150HFEEF; S1-01700HFEEF	338	554	330	10	M8
	S1-03050HFEEF; S1-03400HFEEF; S1-02600HFEEF S1-03800HFEEF; S1-04250HFEEF	500	870	360	11	M10
	S1-04800HFEEF; S1-05300HFEEF; S1-06000HFEEF; S1-06500HFEEF	680	926	380	13	M12
	S1-07200HFEEF; S1-08600HFEEF	620	1700	580	22	M20







# S1 Series IP55 version Dual Rating (4kW – 110kW)



S1-IP55: Well equipped for decentralized drive applications with the robust S1 in high protection class.

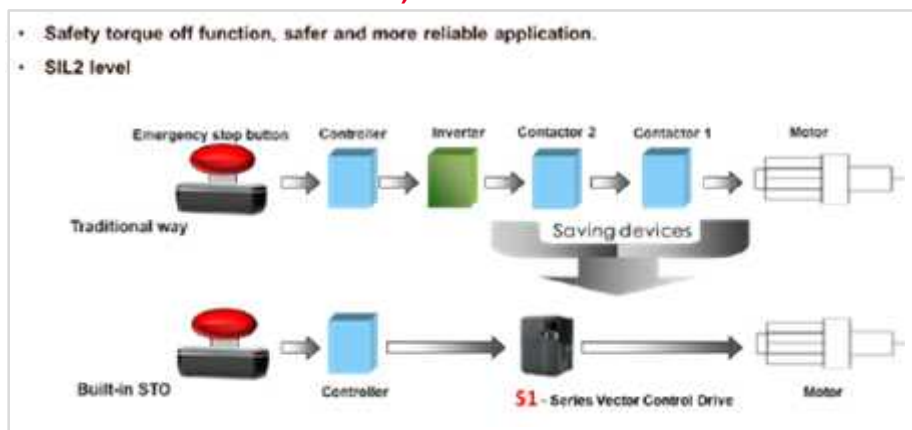
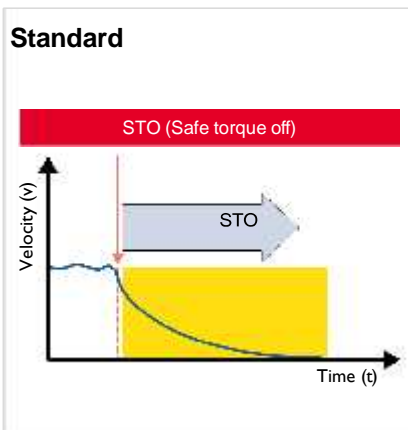
Many applications require that the inverter can be used in close proximity to the motor. A high protection class is therefore essential. In applications such as overhead air vents or agitators in the activated sludge tanks of sewage treatment plants as well as many other applications, it is often a mandatory requirement to be able to install the inverter in a harsh environment threatened by dust or moisture.

The S1 in IP55 version offers this in an efficient version in a power range from 4kW–110kW with integrated C3 filter.

## Features

- Ingress protection rating of IP55 applicable to working environments dust and water vapor conditions (NEMA rating 3S)
- The S1 IP55 inverter is also designed as a dual-rated inverter, to be used cost-effectively in ND or LD mode, depending on the application and load.
- Built-in DC reactors as standard from 18,5kW to 110kW
- Built-in brake chopper (standard from 4 to 37 kW (ND), optional from 45 to 110 kW (ND))

## Safe Torque Off function (STO, common feature for IP20 and IP55)





## General specifications

Function	(0.4kW – 2.2kW)	(4.0kW – 500kW)
Input voltage (V)	AC 1PH 220V (-15%) – 240V (+10%) AC 3PH 380V (-15%) – 440V (+10%)	AC 3PH 380V (-15%) – 440V (+10%) AC 3PH 520V (-15%) – 690V (+10%)
Input current (A)	Refer to Rated value ND or LD	
Input frequency (Hz)	50Hz or 60Hz, allowed range: 47–63Hz	
Output voltage (V)	AC 3PH 0 - Input Voltage	
Output current (A)	Refer to Rated value ND or LD	
Output power (kW)	Refer to Rated value ND or LD	
Output frequency (Hz)	0–400Hz	
Speed control precision	±0.2% (SVC)	
Speed fluctuation	±0.3% (SVC)	
Torque response	<20ms (SVC)	
Torque control precision	10% (SVC)	
Starting torque	0.5Hz/150% (SVC)	0.25Hz/150% (SVC)
Overload capacity	150% of rated current: 1min (ND), 120% of rated current: 1min (LD) 180% of rated current: 10s (ND), 150% of rated current: 10s (LD) 200% of rated current: 1s (ND), 180% of rated current: 1s (LD)	
Frequency setup mode	Digital setting, analog setting, pulse frequency setting, multi-step, speed running setting, PID setting, MODBUS communication setting	
Automatic voltage regulation function	Keep the output voltage constant when grid voltage changes.	
Fault protection function	Fault protection function Provide over 30 kinds of fault protection functions: overcurrent, overvoltage, undervoltage, overtemperature, phase loss and overload, etc.	
Speed tracking restart function (Catch-on-the-fly)	-	Realize impact-free starting of the rotating motor
Analog input	2 inputs: 0–10V / 0–20mA and -10–10V	
Analog output	1 output: 0–10V / 0–20mA	
Digital input	4 common inputs, max. frequency: 1kHz; 1 high speed input, max. frequency: 50kHz	4 common inputs; max. frequency: 1kHz; 2 high-speed inputs; max. frequency: 50kHz
Digital output	1 high-speed pulse output; max. frequency: 50kHz 1 Y terminal open collector output	
Relay output	1 programmable relay output RO1A NO, RO1B NC, RO1C common port 3A/AC250V, 1A/DC30V	2 programmable relay outputs RO1A NO, RO1B NC, RO1C common port RO2A NO, RO2B NC, RO2C common port 3A/AC250V, 1A/DC30V
Terminal analog input	Less than 20mV	
Terminal digital input resolution	Less than 2ms	
Degree of Protection	IP20	
Operating ambient temperature	-10–50°C, derating is required if the ambient temperature exceeds 40°C	
Speed regulation ratio	1:100 (SVC)	1:200 (SVC)
EMC filter	- Optional external filter fulfils IEC61800-3 C2	Built-in EMC filter fulfils IEC61800-3 C3 Optional external filter fulfils IEC61800-3 C2
Cooling mode	Air-cooling	
Installation mode	Wall and rail mountable	Support wall-mounting, floor-mounting and flange-mounting
Functional Safety	STO: SIL2	
Pollution level	Level 2	
Altitude	<1000m If the sea level is above 1000m, please derate 1% for every additional 100m.	
Brake unit	Brake unit up to 37kW, Optional brake unit from 45kW	
Certification	CE marking	



## Standard specifications

Model name S1-*****		00032SF E	00055SFE	00100SFE	00130SFE	00032HFE	00055HFE	00073HFE	00125HFE F	00170HFE F	00230HFE F
<b>Degree of Protection</b>		IP20									
<b>Applicable motor capacity (4 poles) (kW)</b>	LD	0.75	1.10	2.20	3.00	1.10	2.20	3.00	5.50	7.50	11.0
	ND	0.40	0.75	1.50	2.20	0.75	1.50	2.20	4.00	5.50	7.50
<b>Rated capacity (kVA)</b>	LD	0.74	1.27	2.30	3.00	2.21	3.80	5.05	8.65	12.80	15.92
	ND	0.58	0.97	1.73	2.30	1.70	2.90	3.80	6.60	9.70	12.8
<b>Rated AC input voltage</b>		AC 1PH 220V (-15%) – 230V (+10%)					AC 3PH 380V (-15%) – 440V (+10%)				
<b>Rated output current (A)</b>	LD	3.20	5.50	10.0	13.0	3.20	5.50	7.30	12.5	17.0	23.0
	ND	2.50	4.20	7.50	10.0	2.50	4.20	5.50	9.50	14.0	18.5
<b>Overload current rating</b>	LD	120% 60sec / 150% 10s / 180% 1s									
	ND	150% 60sec / 180% 10s / 200% 1s									
<b>Rated output voltage</b>		AC 3PH: 230 or 400V (proportional to input voltage)									
<b>Starting torque (ND)</b>		0.50Hz/150% (SVC) (ND)							0.25Hz/150% (SVC) (ND)		
<b>Regenerative braking</b>		Brake unit up to 37kW, Optional brake unit from 45kW									
<b>Minimum resistance value ( )</b>		42	42	30	21	240	170	130	80	60	47
<b>H (height) (mm)</b>		160	160	185	185	185	185	185	186	256	256
<b>W (width) (mm)</b>		80	80	80	80	80	80	80	126	146	146
<b>D (depth) (mm)</b>		123.5	123.5	140.5	140.5	140.5	140.5	140.5	201	192	192
<b>Weight (kg)</b>		0.9	0.9	1.2	1.2	1.0	1.0	1.0	2.5	2.5	3.0

Model name S1-*****HFEF		00320	00380	00450	00600	00750	00920	01150	01500	01700	02150
<b>Degree of Protection</b>		IP20									
<b>Applicable motor capacity (4 poles) (kW)</b>	LD	15.0	18.5	22.0	30.0	37.0	45.0	55.0	75.0	90.0	110.0
	ND	11.0	15.0	18.5	22.0	30.0	37.0	45.0	55.0	75.0	90.0
<b>Rated capacity (kVA)</b>	LD	22.1	26.3	31.1	41.5	51.9	63.7	79.6	103.8	118.0	148.8
	ND	17.3	22.1	26.3	31.1	41.5	51.9	63.7	79.6	103.8	124.6
<b>Rated AC input voltage</b>		AC 3PH 380V (-15%) – 440V (+10%)									
<b>Rated output current (A)</b>	LD	32.0	38.0	45.0	60.0	75.0	92.0	115.0	150.0	170.0	215.0
	ND	25.0	32.0	38.0	45.0	60.0	75.0	92.0	115.0	150.0	180.0
<b>Overload current rating</b>	LD	120% 60sec / 150% 10s / 180% 1s									
	ND	150% 60sec / 180% 10s / 200% 1s									
<b>Rated output voltage</b>		AC 3PH: 230 or 400V (proportional to input voltage)									
<b>Starting torque</b>		0.25Hz/150% (SVC) (ND)									
<b>Regenerative braking</b>		Brake unit up to 37kW, Optional brake unit from 45kW									
<b>Minimum resistance value ( )</b>		31	23	19	17	17	11.7	6.4	6.4	6.4	4.4
<b>H (height) (mm)</b>		320	320	340.6	340.6	400	400	560	560	554	554
<b>W (width) (mm)</b>		170	170	200	200	250	250	282	282	338	338
<b>D (depth) (mm)</b>		220	220	208	208	223	223	258	258	330	330
<b>Weight (kg)</b>		6.0	6.0	8.5	8.5	16.0	16.0	25.0	25.0	25.0	41.0



Model name S1-****HFEF	02600	03050	03400	03800	04250	04800	05300	06000	06500	07200	08600	
Degree of Protection	IP20											
Applicable motor capacity (4 poles) (kW)	LD	132.0	160.0	185.0	200.0	220.0	250.0	280.0	315.0	350.0	400.0	500.0
	ND	110.0	132.0	160.0	185.0	200.0	220.0	250.0	280.0	315.0	350.0	400.0
Rated capacity (kVA)	LD	179.9	211.1	235.3	263.0	294.1	332.2	366.8	415.2	449.8	498.2	595.1
	ND	148.8	179.9	211.1	235.3	263.0	294.1	332.2	366.8	415.2	449.8	498.2
Rated AC input voltage	AC 3PH 380V (-15%) – 440V (+10%)											
Rated output current (A)	LD	260.0	305.0	340.0	380.0	425.0	480.0	530.0	600.0	650.0	720.0	860.0
	ND	215.0	260.0	305.0	340.0	380.0	425.0	480.0	530.0	600.0	650.0	720.0
Overload current rating	LD	120% 60sec / 150% 10s / 180% 1s										
	ND	150% 60sec / 180% 10s / 200% 1s										
Rated output voltage	AC 3PH: 230 to 400V (proportional to input voltage)											
Starting torque (ND)	0.25Hz/150% (ND) (SVC)											
Regenerative braking	Brake unit up to 37kW, Optional brake unit from 45kW											
H (height) (mm)	554	870	870	870	870	960	960	960	960	1700	1700	
W (width) (mm)	338	500	500	500	500	680	680	680	680	620	620	
D (depth) (mm)	330	360	360	360	360	380	380	380	380	560	560	
Weight (kg)	41.0	85.0	85.0	85.0	85.0	135.0	135.0	135.0	135.0	350.0	350.0	

Model S1-****HFEF-55M	00125	00170	00230	00320	00380	00450	00600	00750	00920	01150	01500	01700	02150	02150-55MND	
Degree of Protection	IP55														
Mains Switch	Integrated as standard														
Display	Full Graphic LCD														
Applicable motor capacity (4 poles) (kW)	LD	5.50	7.50	11.0	15.0	18.5	22.0	30.0	37.0	45.0	55.0	75.0	90.0	110.0	–
	ND	4.00	5.50	7.50	11.0	15.0	18.5	22.0	30.0	37.0	45.0	55.0	75.0	90.0	110.0
Rated capacity (kVA)	LD	8.65	12.80	15.92	22.1	26.3	31.1	41.5	51.9	63.7	79.6	103.8	118.0	148.8	–
	ND	6.60	9.70	12.8	17.3	22.1	26.3	31.1	41.5	51.9	63.7	79.6	103.8	124.6	148.8
Rated AC input voltage	AC 3PH 380V (-15%) – 440V (+10%)														
Rated output current (A)	LD	12.5	17.0	23.0	32.0	38.0	45.0	60.0	75.0	92.0	115.0	150.0	170.0	215.0	–
	ND	9.50	14.0	18.5	25.0	32.0	38.0	45.0	60.0	75.0	92.0	115.0	150.0	180.0	215.0
Overload current rating	LD	120% 60sec / 150% 10s / 180% 1s													–
	ND	150% 60sec / 180% 10s / 200% 1s													
Rated output voltage	AC 3PH: 400V (proportional to input voltage)														
Starting torque (ND)	150% from 0.25Hz (SVC) (ND)														
Braking Chopper	Standard										Optional				
Minimum resistance value ( )	80	60	47	31	23	19	17	17	11.7	6.4	6.4	6.4	4.4	4.4	
H (height) (mm)	403	403	475	475	475	522	522	587	587	800	800	788	788	788	
W (width) (mm)	260.5	260.5	289.4	289.4	289.4	279.5	279.5	290	290	336.7	336.7	380	380	380	
D (depth) (mm)	196	196	223	223	223	274	274	318	318	338	338	370	370	370	
Weight (kg)	7.0	7.0	13.0	13.0	13.0	21.0	21.0	26.5	26.5	48.2	48.2	64.0	64.0	64.0	





## Specifications for model 690V

Model name S1-*****GFEF	0270	00350	00450	00520	00620	00860	00980	01200	01500	01750	02000	
<b>Degree of Protection</b>	IP20											
<b>Applicable motor capacity (4 poles) (kW)</b>	ND	22	30	37	45	55	75	90	110	132	160	185
<b>Rated capacity (kVA)</b>	ND	30,8	40,0	51,4	59,4	70,8	98,2	111,9	137	171,3	199,8	228,4
<b>Rated AC input voltage</b>	AC 3PH 520V(-15%)~690V(+10%)											
<b>Rated output current (A)</b>	ND	27	35	45	52	62	86	98	120	150	175	200
<b>Overload current rating</b>	ND	150% 60sec / 180% 10s / 200% 1s										
<b>Rated output voltage</b>	AC 3~: 660V to 690V (proportional to input voltage)											
<b>Starting torque (ND)</b>	0.25Hz/150% (ND) (SVC)											
<b>Regenerative braking</b>	external option											
<b>Minimum resistance value ( )</b>	10	10	10	10	10	10	10	10	10	6,9	6,9	5,0
<b>H (height) (mm)</b>	555	555	555	555	680	680	680	680	680	680	870	870
<b>W (width) (mm)</b>	270	270	270	270	325	325	325	325	325	325	500	500
<b>D (depth) (mm)</b>	325,0	325,0	325,0	325,0	365,0	365,0	365,0	365,0	365,0	365,0	365,0	360
<b>Weight (kg)</b>	30	30	30	30	47	47	47	47	47	47	85	85

Model name S1-*****GFEF	02200	02400	02700	03000	03500	03800	04300	04600	05400	06000	06800	
<b>Degree of Protection</b>	IP20											
<b>Applicable motor capacity (4 poles) (kW)</b>	ND	200	220	250	280	315	355	400	450	500	560	630
<b>Rated capacity (kVA)</b>	ND	251,2	274,0	308,3	342,5	399,6	433,9	491,0	530,9	616,6	685,1	776,4
<b>Rated AC input voltage</b>	AC 3PH 520V(-15%)~690V(+10%)											
<b>Rated output current (A)</b>	ND	220	240	270	300	350	380	430	465	540	600	680
<b>Overload current rating</b>	ND	150% 60sec / 180% 10s / 200% 1s										
<b>Rated output voltage</b>	AC 3~: 660V to 690V (proportional to input voltage)											
<b>Starting torque (ND)</b>	0.25Hz/150% (ND) (SVC)											
<b>Regenerative braking</b>	external option											
<b>Minimum resistance value ( )</b>	5,0	5,0	3,4	3,4	3,4	3,4	2,8	3,4x2	3,4x2	3,4x2	3,4x2	3,4x2
<b>H (height) (mm)</b>	870	870	960	960	960	960	1700	1700	1700	1700	1700	1700
<b>W (width) (mm)</b>	500	500	680	680	680	680	620	620	620	620	620	620
<b>D (depth) (mm)</b>	360	360	380	380	380	380	560	560	560	560	560	560
<b>Weight (kg)</b>	85	85	135	135	135	135	350	350	350	350	350	350

Hitachi Europe GmbH, Niederkasseler Lohweg 191, D-40547 Düsseldorf  
 Phone: +49 (0) 211-5283-0  
[www.hitachi-industrial.eu](http://www.hitachi-industrial.eu), [automation.industrial@hitachi-eu.com](mailto:automation.industrial@hitachi-eu.com)

All company and product names in this brochure are the property of the respective companies.